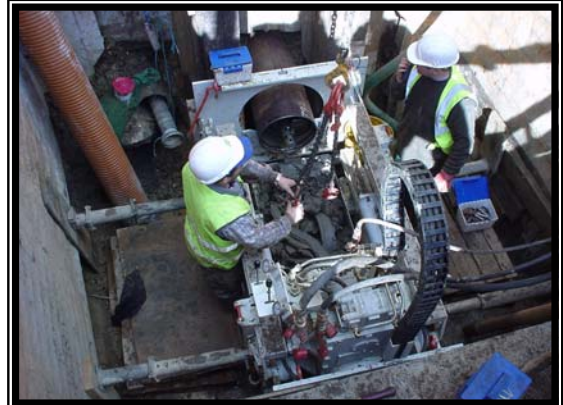
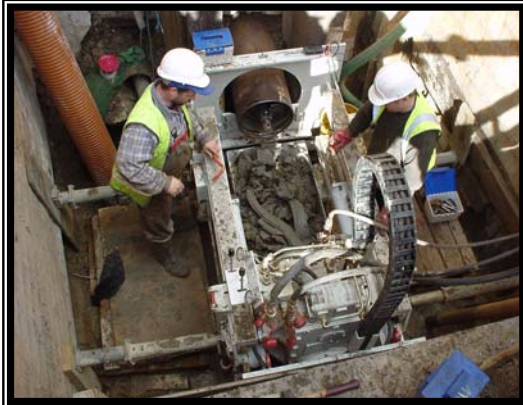


Laser-guided Auger Boring

TRENCHLESS TECHNOLOGY



Install mains water pipes

Install cable ducts, water and gas pipes

Drill under buildings, roads, gardens etc

Designed to work in small areas

50 metre shots in one operation

Launch above or below ground

Drill in poor ground or conditions

Drill vertically as well as horizontally



www.crbservices.co.uk ✓

CRB SERVICES & ASSOCIATES LTD. Trading as CRB Services & associates and crbservices.co.uk

This document is © CRB Services & Associates and protected by UK copyright law. Publication, copying, hiring, lending and reproduction are strictly prohibited without prior permission of CRB Services & Associates, and constitutes a breach of copyright.

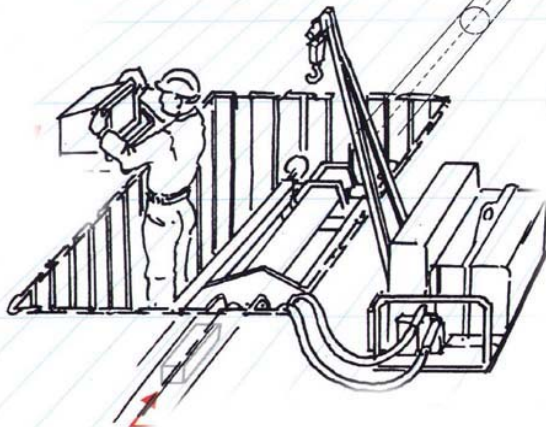
LASER-GUIDED AUGER BORING

WHAT IS IT?

The innovative laser-guided auger boring machine utilises the latest modern engineering techniques. Its power, accuracy, size and capability make it an invaluable tool in the world of trenchless technology.

If you want to install a clean water pipe underneath a building, road, pathway, stream, runway, railway track, or in difficult ground using large diameter pipe, then it is most likely that laser-guided auger boring would be the most suitable platform.

Laser-guided auger boring also allows us to drill water mains and conduits where trenching is not an option. Running sand and gravels can be readily dealt with.



HOW DOES IT WORK?

Laser-guided auger boring operates from a pit, approximately 2.5 metres in diameter. The depth of the pit is slightly deeper than the depth of the intended new pipe, thus allowing us to start drilling at the required level. This differs from many of its counterparts, such as ground launched drilling platforms, as the ability to start drilling when already at the required depth enables laser-guided auger boring to work in more confined locations, saving time and ultimately expense.

When sat in the pit, the auger borer drills towards a receiving pit at the end of the required run. If the soil conditions require it, a chemical agent will be sprayed when creating the bore to keep it intact. The progress of the drill head is constantly monitored whilst it is creating the bore to ensure it drills exactly where intended. If the drill head is going off course, it is able to change direction both horizontally and vertically using the laser guidance system, which is accurate to 1% over 50meters.

Once the drill head has reached the receiving pit, the casings are jacked in, which allows the augers to drill out the ground. Finally the ceramic pipe is pushed in displacing the casings until the run is complete.

Contact the office for data sheets on the other services we provide:

- >UNDER PRESSURE DRILLING
- >SPECIALISED LINING
- >DEEP SHAFT WORK
- >PIPE TRACING
- >CONTAMINATED LAND SURVEYS
- >SITE INVESTIGATIONS
- >TOPOGRAPHIC SURVEYS
- >SPECIALISED SWIMMING POOL WORK

CRB Services & Associates, PO Box 204, Malvern, Worcestershire, WR13 6YS.

Phone: 01684 540622 Fax: 01684 541230 e-mail: info@crbservices.co.uk

Southern Office: Tel: 01474 325551 Fax: 01474 325441